



Access Amazing™.

Enjoy entry to 80+ top London attractions. Save big on gate prices with The London Pass®.

Sale! Save up to an extra 25%!

Offer ends Tuesday 16th July

Narrow down your favorite attractions with the filters below

FILTERS

SORT

IMAGE VIEW

LIST VIEW

MAP VIEW



Tower of London
Included with pass - Normally £28



Hop-On, Hop-Off Bus Tour
Included with pass - Normally £34



The View from the Shard
Included with pass - Normally £32



Thames River Boat Cruise
Included with pass - Normally £19



Westminster Abbey
Included with pass - Normally £23



Tower Bridge
Included with pass - Normally £10





St. Paul's Cathedral

Included with pass - Normally £20



Hampton Court Palace

Included with pass - Normally £24



Kensington Palace

Included with pass - Normally £20



London Zoo

Included with pass - Normally £27



London Bridge Experience

Included with pass - Normally £29



Shakespeare's Globe Theatre

Included with pass - Normally £17



Churchill War Rooms

Included with pass - Normally £22



HMS Belfast

Included with pass - Normally £16



Royal Albert Hall

Included with pass - Normally £15



Kew Gardens

Included with pass - Normally £18





Royal Observatory Greenwich
Included with pass - Normally £16



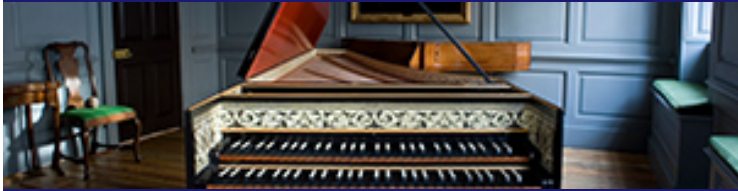
Cutty Sark
Included with pass - Normally £15



ArcelorMittal Orbit
Included with pass - Normally £13



Windsor Castle
Included with pass - Normally £23



Handel & Hendrix London
Included with pass - Normally £10



Science Museum IMAX
Included with pass - Normally £11



Wembley Stadium Tour
Included with pass - Normally £20



The Queen's Gallery
Included with pass - Normally £14



The Postal Museum
Included with pass - Normally £17



The Kia Oval Tour
Included with pass - Normally £15





Royal Mews

Included with pass - Normally £12



Household Cavalry Museum

Included with pass - Normally £8



The Guards Museum

Included with pass - Normally £6



Wimbledon Lawn Tennis Museum

Included with pass - Normally £13



Wimbledon Tour Experience

Included with pass - Normally £25



London Bicycle Tour

Included with pass - Normally £27



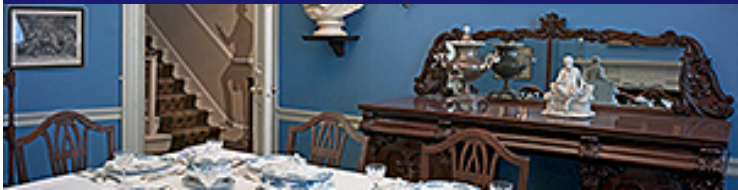
Freud Museum London

Included with pass - Normally £9



The Monument to the Great Fire of London

Included with pass - Normally £5



Charles Dickens Museum

Included with pass - Normally £10



Chelsea FC Stadium Tour

Included with pass - Normally £24





Beefeater Gin Distillery Tour
Included with pass - Normally £15



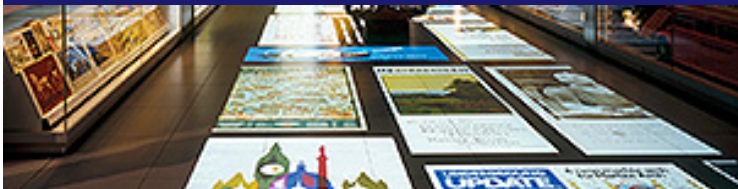
Twickenham Stadium Tour and Rugby Museum
Included with pass - Normally £25



Emirates Stadium Tour - Arsenal FC
Included with pass - Normally £25



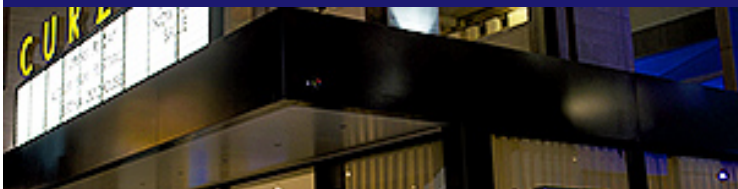
Banqueting House
Included with pass - Normally £7



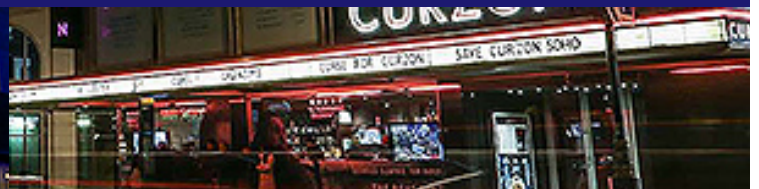
London Transport Museum
Included with pass - Normally £18



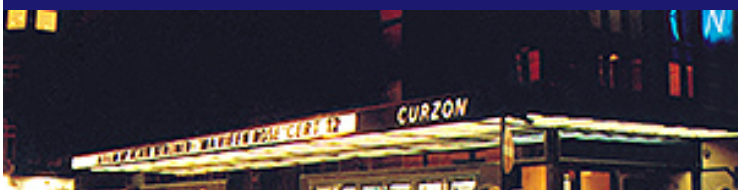
Golden Hinde
Included with pass - Normally £5



Curzon Bloomsbury
Included with pass - Normally £17



Curzon Cinema Soho
Included with pass - Normally £17



Curzon Mayfair Cinema
Included with pass - Normally £17



QUEENS Skate Dine Bowl
Included with pass - Normally £15





Estorick Collection of Modern Italian Art
Included with pass - Normally £8



Chelsea Physic Garden
Included with pass - Normally £10



Cartoon Museum
Included with pass - Normally £7



Eltham Palace
Included with pass - Normally £15



Fan Museum
Included with pass - Normally £5



Jason's Original Canal Boat Trip
Included with pass - Normally £10



London Wetland Centre
Included with pass - Normally £13



Wernher Collection at Ranger's House
Included with pass - Normally £10



Jewish Museum London
Included with pass - Normally £8



Benjamin Franklin House
Included with pass - Normally £8





Apsley House

Included with pass - Normally £12



London Canal Museum

Included with pass - Normally £5



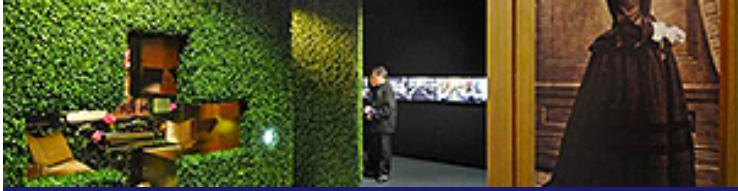
Keats House

Included with pass - Normally £8



BAPS Shri Swaminarayan Mandir

Included with pass - Normally £2



Florence Nightingale Museum

Included with pass - Normally £8



National Theatre Backstage Tours

Included with pass - Normally £10



Bicester Village Shopping Express

Included with pass - Normally £28



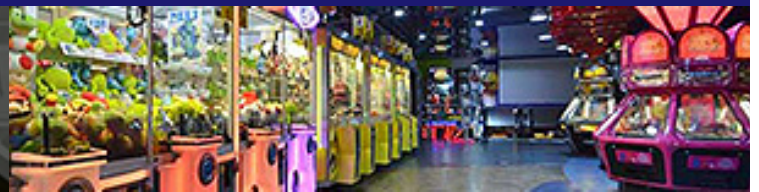
Jewel Tower

Included with pass - Normally £6



Brit Movie Tours

Included with pass - Normally £12



Namco Funscape

Included with pass - Normally £3





London Brass Rubbing Centre
Included with pass - Normally £5



London Museum of Water and Steam
Included with pass - Normally £11



Wellington Arch
Included with pass - Normally £6



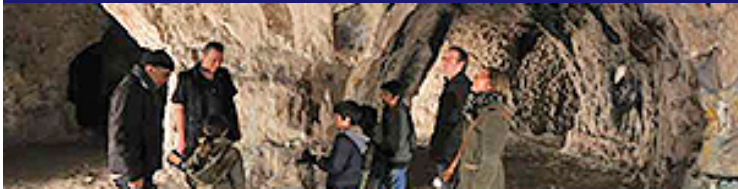
The Foundling Museum
Included with pass - Normally £11



Rock n Roll Walking Tour
Included with pass - Normally £10



Pollock's Toy Museum
Included with pass - Normally £6



Chislehurst Caves
Included with pass - Normally £6



Museum of Brands, Packaging and Advertising
Included with pass - Normally £9



The Old Operating Theatre Museum
Included with pass - Normally £7



Attractions where public entry is free



National Gallery

National Portrait Gallery



V&A Museum

Imperial War Museum London



Southwark Cathedral

National Army Museum



Guildhall Art Gallery

National Maritime Museum



museum highlights



Museum of London



Museum of London Docklands



Royal Air Force Museum



All Hallows by the Tower



Special Offers



Buckingham Palace



Discount Theatre Tickets



London Helicopter Tour



London Walking Tour



Westfield London & Westfield Stratford City



The London Cabaret Club





Cucumba



Bateaux London Restaurant Cruise



Walk-in BackRub



City Secrets Walks



Beatles Store & It's Only Rock 'n' Roll



Moneycorp Bureau de Change London



Crest of London



French Brothers River Cruise



Cellhire London



Foyles Bookshop





Drink Lovers Tours



John Lewis -Oxford Street



Tea and Tattle



M&M's World London



Medieval Banquet



Nauticalia



The East India Company



Things British



Wafflemeister



Back to top 

View how much you can save with The London Pass®

[View savings](#)

Great 

Based on 14,774 reviews on  Trustpilot



by Scott Sexton

6 days ago

I purchased the London Pass on the...

I purchased the London Pass on the advise of a YouTube tour guide named Joolz. As he mentioned, it is impossible to visit all the sites the London Pass features. With only 2 days to see as much as we could, we were able to save \$115.20 pounds per ticket on the attractions we did get to visit. This pass offers something for everyone. If you are into royatly, or history, or fun things to do, you will get your money's worth on this pass. You will have to make sure you plan well, and allow time to

[Read more](#)



by Kseniya Galina

8 July

Excellent! :)

London Pass is profitable and very comfortable. Recomend for everybody!



by Melinda Bruce Branch

7 July

The only:

- London city pass with an app & fast-track entry on select attractions
- All-inclusive pass rated 4+ on Google
- London sightseeing pass with 3+ million happy customers

Save up to a further 25% for a limited time only (Offer ends Tuesday 16th July)

Buy now

Quick Links

[Skip the Lines](#)

[Things to do in London](#)

[London Top 10](#)

[London Pass Concierge](#)

[London Pass Blog](#)

[What's on in London](#)

[London Tourist Map](#)

[London Pass Dining Guide](#)

[Buckingham Palace](#)

[Closures and Notices](#)

Get updates

Enter email address

Subscribe

I want to receive emails to help me plan my trip, including: London attraction updates, travel tips, itineraries & exclusive London Pass holder discounts on theatre shows, tours and other city passes in adherence to our data policy.

Social



Get the London Pass App



Brought to you by

LEISURE PASS GROUP

DOWNLOAD OUR LONDON PASS GUIDEBOOK FOR FREE!



Your email address

DOWNLOAD

By using the londonpass.com website you agree to our use of cookies as described in our [cookie policy](#).

By submitting my email, I agree to receive promotional emails, in line with The London Pass

Accept

